

**CURTISS -  
WRIGHT**



---

# Construction

Components & Sub-System Solutions  
for Commercial Vehicles

## Curtiss-Wright Industrial Division

Curtiss-Wright Industrial Division is a recognized leader in providing components and sub-systems that enable customer specific solutions for on- and off-highway vehicles. These include material handling, construction, agricultural and other specialty vehicles, plus medium- and heavy-duty trucks, buses, and motor coaches, as well as sophisticated wheelchairs and scooters for medical mobility.

We are a leading provider of electronic throttle controls, transmission shifters, and sensors addressing the long-term trend across the globe towards attaining higher fuel efficiency and lower emissions. We are also addressing new energy solutions for a greener environment by providing advanced motor controllers and power electronics for hybrid and electric vehicles. In an effort to improve vehicle safety and operator efficiency, we also supply various human interface and operator controls that act seamlessly in today's modern cab environment.



## Why Choose Curtiss-Wright?

### Extensive Experience

Curtiss-Wright Industrial Division has established a leading position in various markets by being highly responsive to specific customer requirements.

This diverse application knowledge base includes:

- Excavator
- Skid Steer
- Backhoe
- Loader
- Dump Truck
- Cement Mixer
- Crane / Telescopic Handler
- Road Grader
- Mining Vehicles
- Paving Equipment
- Pipe Layers

### Innovative Products

We are proud of our product legacy spanning nearly 85 years, providing customer specific solutions to market leading OEMs in various markets such as construction and off-highway.

Using our applications engineering expertise with customer development teams, we enable a free flow of ideas that provide the most reliable and cost-effective product solution to each unique application.

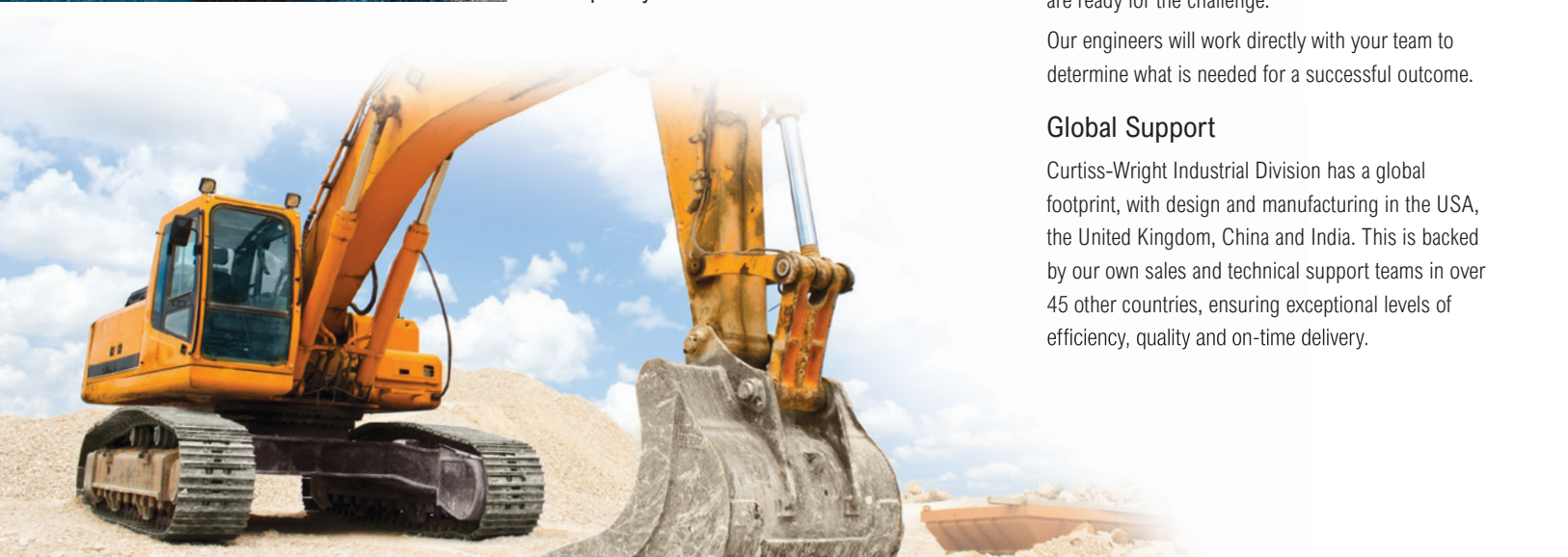
### Reliable Partner

We have long-term relationships with many of the industry-leading OEMs. Whether customizing an existing product to better suit an application, or creating completely new concepts to address an OEM specification, our global team of engineers are ready for the challenge.

Our engineers will work directly with your team to determine what is needed for a successful outcome.

### Global Support

Curtiss-Wright Industrial Division has a global footprint, with design and manufacturing in the USA, the United Kingdom, China and India. This is backed by our own sales and technical support teams in over 45 other countries, ensuring exceptional levels of efficiency, quality and on-time delivery.



## Serving the Construction Industry

The global demand for improved infrastructure as well as increased expectations for operator health and safety has compelled the construction industry to require flexible solutions that integrate state-of-the-art controls with a focus on lowest total cost of ownership.

Curtiss-Wright has a long history of providing highly precise and reliable components and sub-systems to meet the needs of our customers who must comply with the latest government regulations in the harshest operating environments while adhering to project targets.

With engineering and production facilities located around the globe, Curtiss-Wright is dedicated to meeting the diverse needs of the construction industry. These teams have developed a wide range of efficient power electronics, HMI consoles, and high precision sensors that can be customized to meet your specifications on time and within budget.

## Product Families

### Electronic Throttle Controls

- Floor-Mounted Pedals
- Suspended Pedals
- Rocker Pedals
- Hand Controls



### Electronic Transmission Shifters

- Push Button
- Lever
- Column-Mounted
- Shift-By-Wire



### Position Sensors

- Rotary Hall-Effect Sensors
- Linear and In-Cylinder Sensors
- Tilt Sensors



### Joystick Controls

- Fingertip Joysticks and Rockers
- Mid-Sized Joysticks
- Rugged Joysticks and Hand-Grips
- Single- and Dual-Axis Hydraulic Levers



### HMIC

The Curtiss-Wright global team has extensive knowledge, expertise and experience to integrate systems consisting of user interface controls, system controller, displays, actuators and other systems to economically improve vehicle performance, efficiency, safety and functionality.



#### CW System Elements Include:

- HMIC Control Algorithms Unique to Vehicle and Application
- HMIC Controller Hardware
- Operator Controls Unique to Vehicle and Application that can be used with CW and Competitor Components

#### The Benefits Include:

- Improve Operator / Vehicle Safety, Efficiency and Functionality to Meet Increasing Market Requirements
- Reduce Cost / Complexity or Add Value to Distributed Vehicle Architecture and Discrete Components
- Enhance Diagnostic and Troubleshooting Feedback

### Power Management Products



- Traction Inverters Product Line
  - Up to 800VDC Input Voltage
  - Single and Dual Inverters
  - Peak Power 160KVA to 530KVA
  - Automotive Grade Modular Construction
- Power Distribution Modules
  - 12/24VDC Systems on Highway Vehicles
  - 360VDC Power Systems for Hybrid Vehicles
  - 700VDC High Energy Vehicle Junction Box for Hybrid Vehicles

CAN J1939 is available for various pedals, sensors, shifters and joysticks



## AMERICAS

LA, California

T: +1.714.982.1862

E: [cwig.us@curtisswright.com](mailto:cwig.us@curtisswright.com)

Chicago, Illinois

T: +1.847.844.4700

E: [cwig.us@curtisswright.com](mailto:cwig.us@curtisswright.com)

Portland, Oregon

T: +1.503.684.8600

E: [cwig.us@curtisswright.com](mailto:cwig.us@curtisswright.com)

## ASIA

Shanghai, China

T: +86.21.3331.0670

E: [cwig.cn@curtisswright.com](mailto:cwig.cn@curtisswright.com)

Singapore

T: +65.6241.2508

E: [cwig.sg@curtisswright.com](mailto:cwig.sg@curtisswright.com)

Pune, India

T: +91.20.67319100

E: [cwig.in@curtisswright.com](mailto:cwig.in@curtisswright.com)

## EUROPE

Christchurch, UK

T: +44.1202.034000

E: [cwig.uk@curtisswright.com](mailto:cwig.uk@curtisswright.com)

